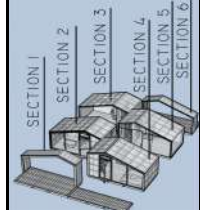


## Modular House M-54



FOOTPRINT = 54m<sup>2</sup>, INTERNAL AREA = 40m<sup>2</sup>, TERRACE = 20m<sup>2</sup>

- ✓ PERFECT SELF-CONTAINED LUXURY GLAMPING LODGE OR HOLIDAY HOUSE
- ✓ SOME ASSEMBLY REQUIRED
- ✓ 6 MODULES - 2 BEDROOMS
- ✓ EACH MODULE WEIGHS LESS THAN 2,000KG - LIFTED BY A FORKLIFT



BASE ITEMS	INCLUDED
Finished internally (walls, roof, floor) and fully insulated	✓
Windows & doors, triple glazed, PVC frame	✓
Electrical installation	✓
h	✓
Terrace	✓
Plumbing installation & ventilation slots	✓
ADDITIONAL COST OPTIONS	EXTRAS
Air conditioning in main area with heating function	<input type="checkbox"/>
Heated floor in main area	<input type="checkbox"/>
Heated floor in WC	<input type="checkbox"/>
Internal and external lighting units, sockets & switches	<input type="checkbox"/>
Toilet, shower and washbasin with cupboard	<input type="checkbox"/>
Boiler	<input type="checkbox"/>
Kitchen with fridge, sink with taps, two zone hob & hood	<input type="checkbox"/>
Closet (to house the boiler & provide storage space)	<input type="checkbox"/>
Additional window in living room (only if ext.wall finish is wooden panels)	<input type="checkbox"/>
Ground-screw foundation	<input type="checkbox"/>
Furniture: bed, couch, table	<input type="checkbox"/>
Transport and unloading	<input type="checkbox"/>
Assembly	<input type="checkbox"/>





8477

