

LOGSPAN

BEST OF BOTH WORLDS



Bespoke Log Cabins

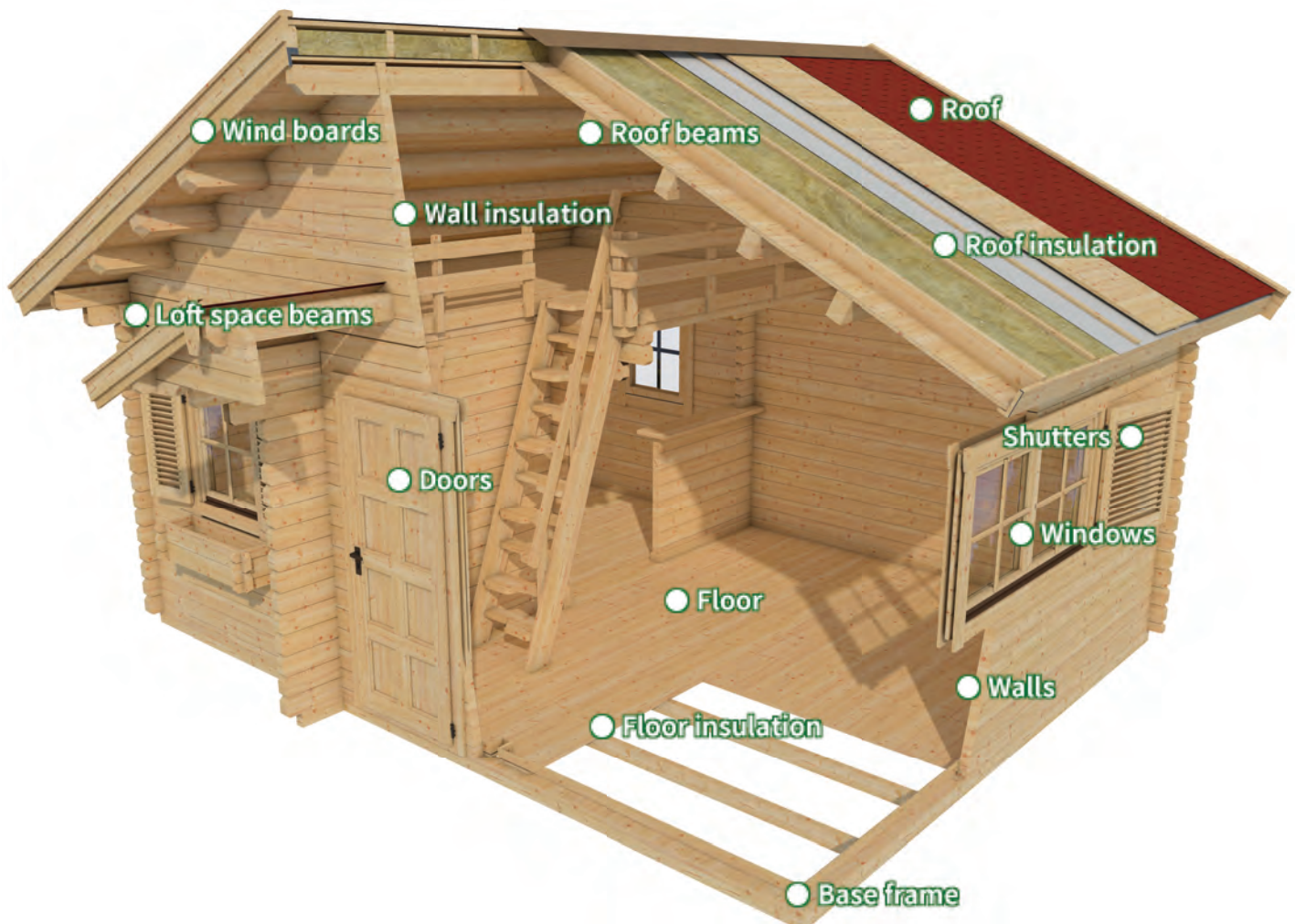
What ever your bespoke requirements, at Logspan we can help you create your garden building suited to your needs.

Log Cabin Design

Log cabin design requires careful thought and planning in order to achieve efficiency and control construction costs:

- Stack bathrooms over each other, or place them next to each other, or stack a bathroom over the kitchen to save on plumbing costs.
- Spend some time on your property at different times of the day and different seasons to get a sense of light and shadow, as well as views that reveal themselves when the leaves disappear. Orient your house to take advantage of the views and the light.
- To utilise passive solar gain, keep the main façade facing south.
- If utilising an existing plan, bear in mind that it's generally not a problem to simply flip the entire design if that gives you a better layout for your site.
- Keep your footprint square to save money on corners - one of the reasons costs can escalate as corners are more difficult for finishing, roofing and require more logs.
- Build up rather than out and you will save money since your footprint remains small. You will maximize your log cabin design and capture more usable floor space on the same foundation on upper levels.
- Plan in an outdoor room to bring the outside in and the inside out. Outdoor space comes in at a fraction of the cost of finished interior space.
- Be careful of too much open, sweeping space inside your cabin. Cozy is good, too. Some rooms benefit from a cozy feel, such as bedrooms and kitchens. Tuck these under a ceiling and leave the open cathedral ceiling for the great room.
- Tucking a fireplace in the corner on the diagonal makes a commanding statement and saves space as well.
- Good lighting is made up of three key elements: task lighting, ambient lighting, and overall space lighting. Consider carefully how you include all three.

These are just a few tips to keep in mind to save money and maximize efficiency with your log cabin design.



Bespoke Log Cabins



Design

We use the latest CAD technologies to design bespoke timber buildings and lodgings for our customers.

With just a few clicks we can change layouts and move walls to help you achieve your perfect space. Its never been easier to watch your dream take shape.



Construction

Our experienced teams of fitters have more than 120 years combined experience working with high-end timber products.

From bases and foundations to the finest post-build details, our teams pride themselves on quality and attention to detail.



Possibilities

Here are some of the possible choices:

- 30mm, 45mm, 60mm, 95mm or 120mm single log wall or twin wall with insulation
- 88mm, 93mm or 143mm fully insulated walls
- Premium draft proof doors and tilt and turn windows
- High quality Roof covering - Premium felt, Bitumen Shingles or Rubber Roofing
- Insulation for floor and roof
- Single or double storey structures
- Terrace and, or veranda is possible on both the width and depth

Finance

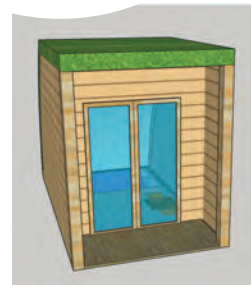
We are able to offer 0% interest finance over 12 months on all timber buildings costing over £1500, terms and conditions apply.

0%

**FINANCE
AVAILABLE**

Burrow

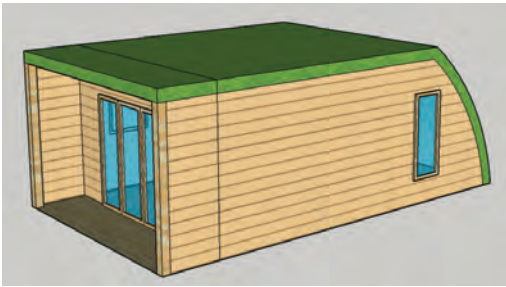
	Cabin Dimensions (m)				Wall Thickness	Doors	Window
	Width	Depth	Eaves	Ridge			
Burrow Pod	2.00	3.00	-	2.72	88mm, 22/44/22	1 x 140/200	-
Burrow Mini	4.00	5.00				1 x 270/200, 3 x 90/198, 2 x 70/198	2 x 70/94, 1 x 70/152
Burrow	9.60	4.00				1 x 270/200, 3 x 90/198, 2 x 70/198	2 x 74/100, 2 x 74/185
Burrow Midi	10.00	3.00				1 x 270/200, 3 x 90/198, 2 x 70/198	2 x 70/94, 2 x 74/100, 2 x 74/185
Burrow Lodge	11.00	5.00				1 x 270/200, 3 x 90/198, 2 x 70/198	2 x 120/94, 2 x 70/94, 2 x 74/100, 2 x 74/185



Houses & Chalets



The Burrow range of fully insulated cabins will blend with your environment. The collection of lodges and pods have been designed to expand your capacity and season without effecting your outlook.



Kura

	Cabin Dimensions (m)				Wall Thickness	Doors	Windows
	Width	Depth	Eaves	Ridge			
Micro	2.00	3.00	1.20	2.72	93mm, 32/45/16	1 x 140/200	1 x 44/55
Lodge	4.00	5.00	2.1			1 x 140/200, 1 x 90/198, 1 x 70/198	1 x 44/55, 4 x 70/198
Asymmetric Mini	9.60	4.00				1 x 135/200, 1 x 70/198	1 x 44/55
Asymmetric Midi	10.00	3.00	1.20			1 x 140/200, 1 x 70/198	2 x 44/55
Asymmetric Lodge						1 x 140/200, 1 x 70/198	2 x 44/55, 3 x 70/198

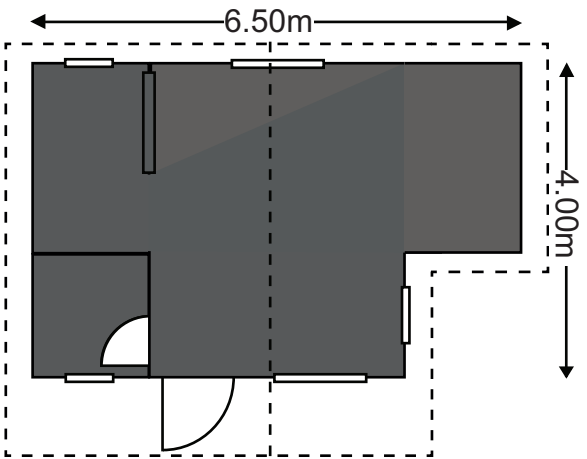


The Kura range of cabins have been designed with a modern feel. They allow the occupants maximum outlook without taking away from the luxurious feel of the accommodation.



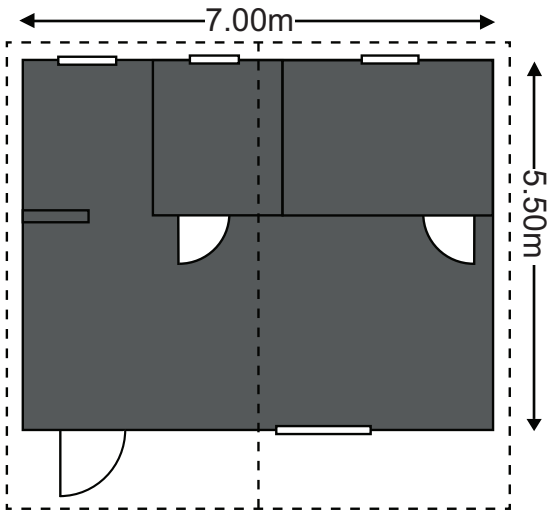
Our Lodges offer a wide choice of styles suitable for residential alternative accommodation or holiday homes.

Ascot T24



Cabin Dimensions (m)				Wall Thickness	Doors	Windows	Overhang
Diameter	Depth	Eaves	Ridge				
6.50	4.00	1.69	2.54	45mm, 60mm, 95mm	1 x 90/196, 1 x 70/196	2 x 70/62, 2 x 80/94, 2 x 120/94	front 100cm, back 20cm, side 20cm

Feldberg



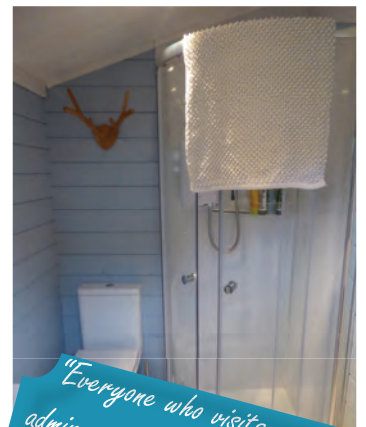
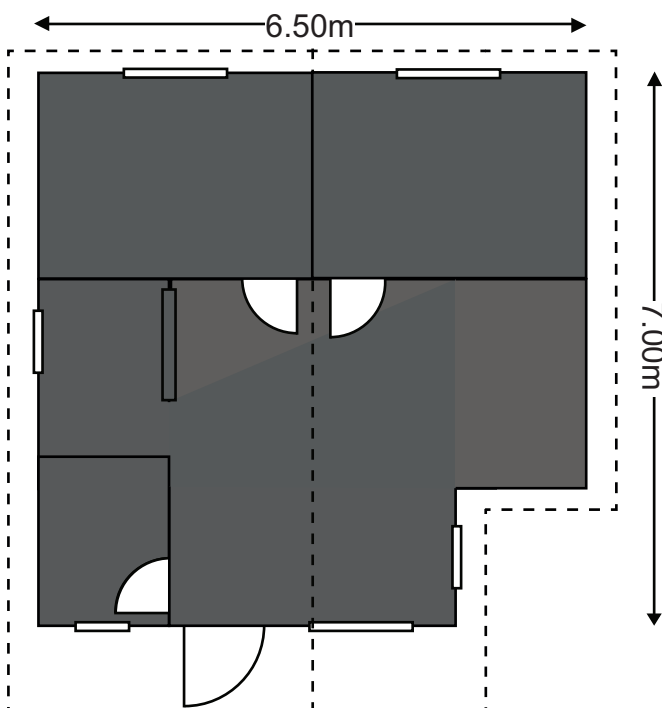
Ascot T24 XL



Cabin Dimensions (m)				Wall Thickness	Doors	Windows	Overhang
Diameter	Depth	Eaves	Ridge				
6.50	7.00	2.08	3.03	45mm, 60mm, 95mm	1 x 70/197, 3 x 90/196	2 x 70/62, 1 x 70/94, 3 x 120/94	front 100cm, back 30cm, side 30cm



Cabin Dimensions (m)				Wall Thickness	Doors	Windows	Overhang
Diameter	Depth	Eaves	Ridge				
7.00	5.50	2.21	3.24	45mm, 60mm, 95mm	3 x 90/196	1 x 50/62, 2 x 80/94, 1 x 120/94, 1 x 140/94	front 120cm, back 30cm, side 30cm



"Everyone who visits us admires it. Logspan provide a great, hassle-free service at a very reasonable cost. We have been absolutely delighted with our cabin."
John

Inspiration Page

A Log Cabin Lodge can serve you in many ways - as an ideal home away from home during the holidays, a full-time escape from the hustle and bustle of modern living, or accommodation for a loved one in your garden.

We can built a bespoke log home for you that will suit your needs.

- **Wall thicknesses from 60mm to fully insulated twin walls of 200mm**
- **Single or double storey**
- **Single room or multi-room**



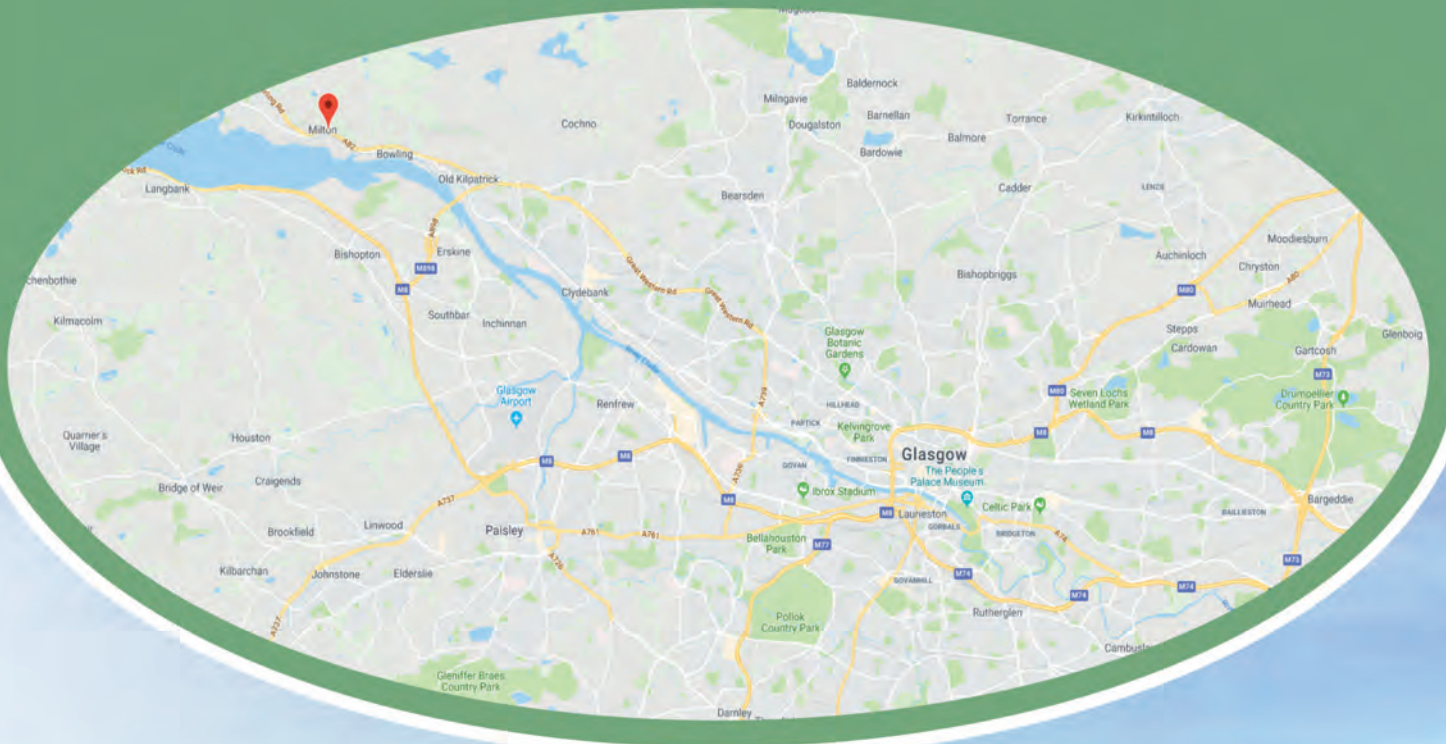


Garages



*"I am still delighted with it.
It still attracts attention and
comments - all positive and visitors
have been impressed with the detail
as well as the structure itself."
Mr Turnbull*





“

Logspan is a family owned business that is dedicated to selling quality timber products that are affordable. Whether it's a Log Cabin to live in, a BBQ Hut, Glamping Cabin, Home Office or Home, we have a product to suit at the right price.

”

MILTON BRAE ROAD, DUMBARTON, GLASGOW, G82 2TX

WWW.LOGSPAN.COM INFO@LOGSPAN.COM 01389 734 572