



LOFT & BUNKHOUSE

FINMAN LOFT

Model information:

Wall thickness	Roof overhang	Eaves height	Ridge height
45mm panels	All around = 20cm	1.2m	Size specific

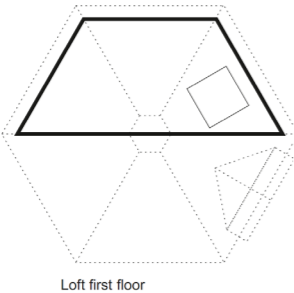
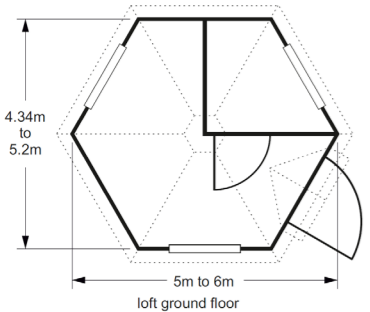


Finman Loft



Optional accessories:

Speak to Sales Representative



FINMAN BUNKHOUSE

Model information:

Wall thickness	Roof overhang	Eaves height	Ridge height
45mm panels	All around = 20cm	1.2m	Size specific

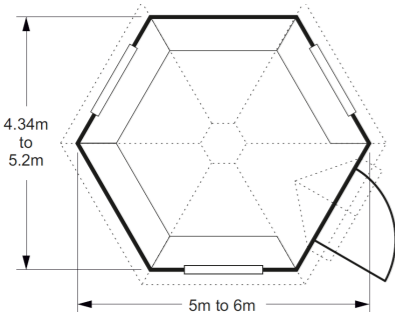


Fin Bunkhouse



Optional accessories:

Speak to Sales Representative



GET IN TOUCH

✉ info@logspan.com

☎ 01389 734 572

📍 Milton Brae Road, Milton,
Dumbarton, Glasgow, G82 2TX

LOGSPAN

In partnership with:



For more
information visit:



WWW.LOGSPAN.COM

LOGSPAN

FINMAN GLAMPING



Finman glamping buildings create an exciting twist to camping, whether you are looking for a single room or a luxury apartment, our Finman range is the perfect choice.

Finman's are constructed from 45mm panels, come fully double glazed and can be custom designed to suit your requirements.

Our Finman bunkhouse is perfect for activity centers and camps, the Loft and the Sleeper for glamping or holiday parks and the Retreat for that added bit of luxury holiday accommodation.

All are supplied as a flat pack kit to be assembled onsite, reducing any access issues. Some images may show additional optional extras.

INCLUDED AS STANDARD

- 60mm x 40mm Base Frame
- 20mm Floor Boards
- 20mm Roof Boards
- Bitumen Shingle Packs
- Door Handles & Locks
- Window Handles (where appropriate)
- Fully Double Glazed

GENERAL OPTIONS

- Larger Base Frame
- Base Build Service
- Build Service
- Floor Insulation
- Wall Insulation
- Roof Insulation
- Lights and Sockets
- Additional Extensions
- Sauna
- Skylights

FINMAN SLEEPER

Model information:

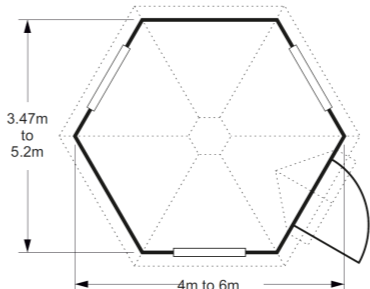
Wall thickness	Roof overhang	Eaves height	Ridge height
45mm panels	All around = 20cm	1.2m	Size specific



Finman Sleeper

Optional accessories:

Speak to Sales Representative



Email: info@logspan.com | Phone: 01389 734 572 | Address: Milton Brae Road, Milton, Dumbarton, Glasgow, G82 2TX

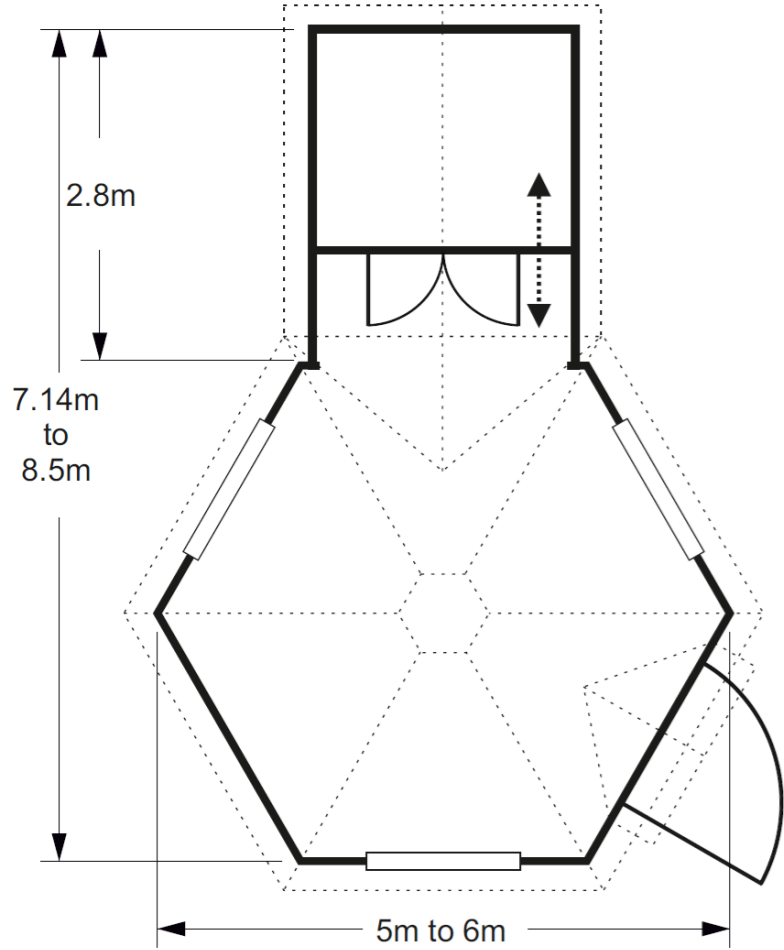


FINMAN RETREAT

Model information:			
Wall thickness	Roof overhang	Eaves height	Ridge height
45mm panels	All around = 20cm	1.2m	Size specific



Optional accessories:	
Speak to Sales Representative	



SUSTAINABLE RETURN ON INVESTMENT

Cabin Cost Range
With a fully installed Finman Retreat typically ranging between £16k and £30k we offer a variety of customisable solutions to suit your specific needs.

Your Hire Rates
For a well-appointed Finman Retreat you can expect to command a nightly rate ranging between £100 and £260. Many customers charge considerably more during peak periods.

Your Investment Realised
Based on a occupancy of 50% per annual, our ROI figures remain conservative and realistic. Typically you will recover your investment between 5 and 20 months.