

Finman Retreat Pod

The cost effective solution for your glamping site



LOGSPAN

2022 Brochure

Specification

- **Pressure Treated Base frame**
- **Floor:** 20mm Tongue & Groove Floor
- **Walls:** 45mm Solid Tongue & Groove Spruce Timber
- **Roof:** 20mm Tongue & Groove Roofboards
- **Double Glazed Windows & Doors**
- **Roof Covering:** Bitumen Roofing Shingles (choice of black, red or green)
- **Hardware:** Euro Locks, Handles, Screws & Fixings Included
- **Space for:** Double Bed OR 2 x Singles
- **Ensuite space for full size shower, WC & basin**

Optional Extras

- Full Glass Door
- 50mm Kingspan Floor Insulation
- 50mm Rockwool Ready Made Roof Panels
- 1.5m Porch & Covered Decking
- Additional Bedroom Extension

We offer 3 sizes of retreat cabin; 4m, 5m & 6m. All models come with the standard specification listed above. Each unit is delivered as a flat pack and is designed for a simple on site assembly. On the pricelist below, (17m²) refers to the floor area.

All prices listed below as exclusive of VAT and INCLUDE delivery via hi-ab offload to the UK Mainland.

	4m Retreat (17m ²)	5m Retreat (23m ²)	6m Retreat (34m ²)
Retreat Size	£7,325	£9,840	£12,683
Optional Extras			
Floor Insulation	£360	£480	£640
Roof Insulation	£1,638	£2,194	£2,530
Porch & Decking	£1,297	£1,390	£1,479
Additional Bedroom	£2,708	£3,211	£3,227
Full Glass Door	£291	£291	£291

PRICES LOCKED UNTIL END OF 2022

FAQ

What comes in the price quoted?

We supply the timber parts and the roof covering. It is a flat kit ready to be fitted out with whatever style or design you like. Our idea with this model is that you make it your own. There are no showers, toilets etc supplied but this allows you to customise it and stand out from your competitors.

Can I put a toilet/ensuite in this pod?

Yes you can. With the retreat, there is room for a toilet, basin and shower.

Are they easy to build?

They are designed as a kit. Think IKEA but in bigger, heavy-duty form! Don't get us wrong, it's best you have some build experience or be a competent DIY'er!

Is there any electricity in this pod?

No. The prices are for the timber kit, doors and roof covering. The idea is that you then install whatever electrics and heating system you like. This can be as simple as putting a plug in electric radiator or a wood burner. Sockets and switches are installed at the time of build as well.

Can I put a log burner in this pod?

For sure. We always say, make sure and get it installed properly with the suitable fire board behind it if required. A stove really goes hand in hand with a Finman Retreat.

What maintenance is required?

As it is made of wood, it will require treatment at least every other year on the outside. This may sound like a lot but remember most of the pod is roof. The walls are only 1200mm high and the maintenance job isn't too bad.

Do I need planning permission?

The first two sizes of Finman Retreat are moveable, the larger one less so. These two models can be picked up in one go and moved if required so in theory no you shouldn't need planning. That being said, we always recommend checking with your local council to see what they say. We can supply scale drawings if required.

If you need anymore information, please do get in touch!

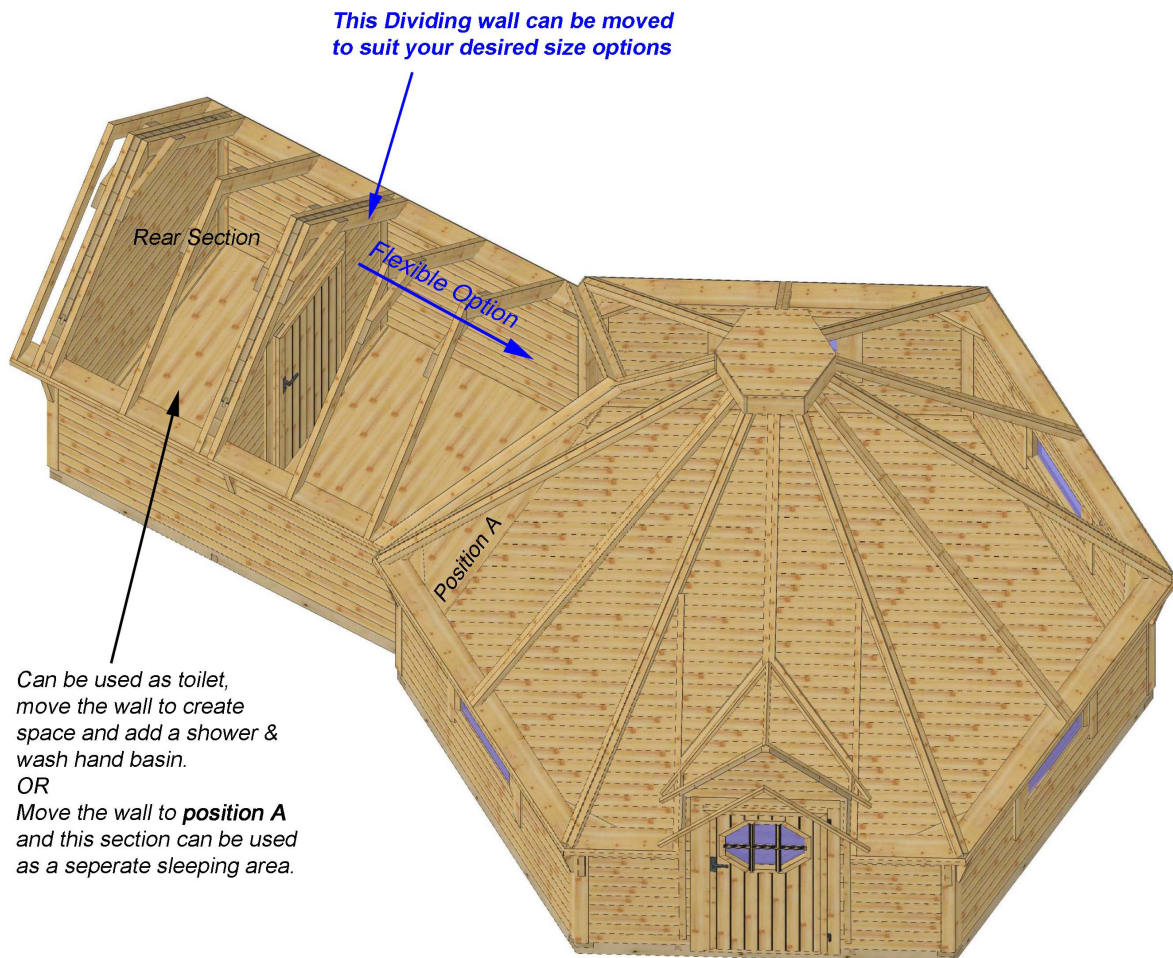
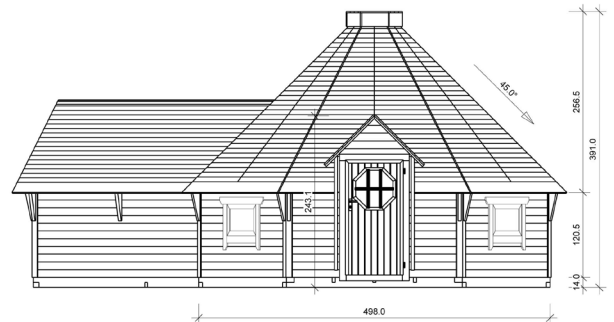
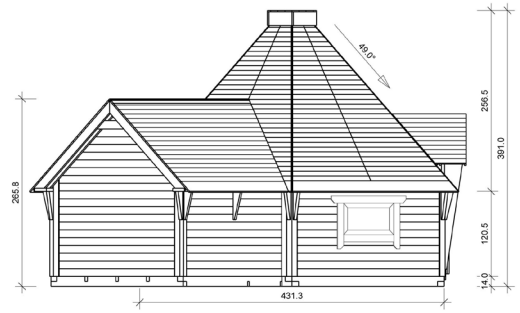
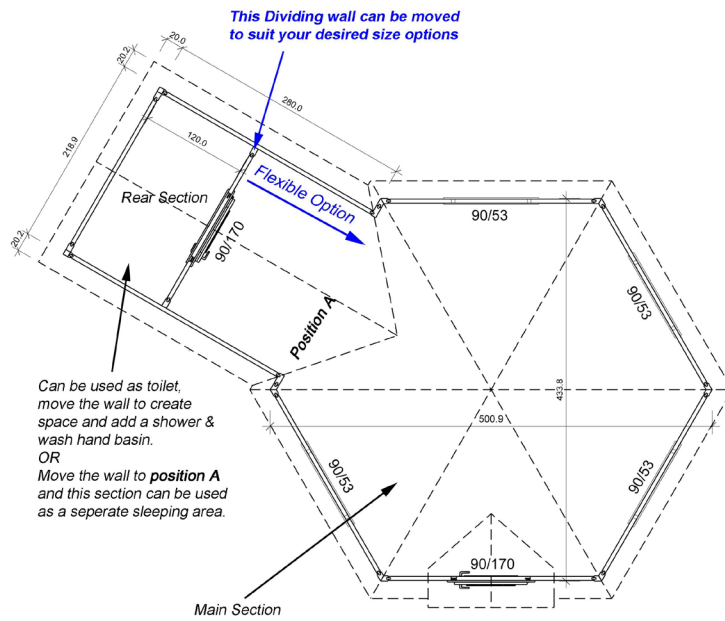




Showing Porch & Decking Option

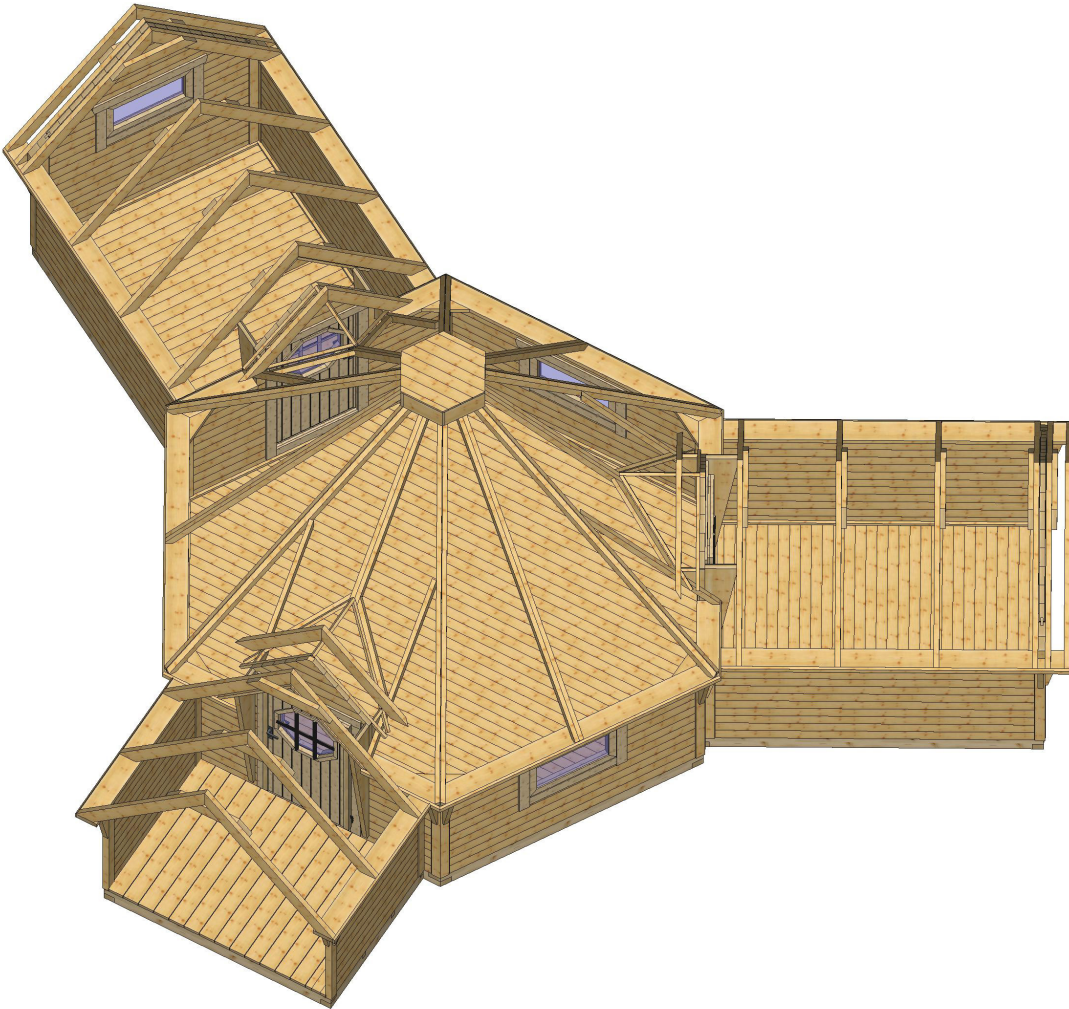


Standard 5m Finman Retreat





Showing additional Extension, Full Glass Door and Porch Options





Showing Porch & Decking Option

01389 734 572
info@logspan.com
www.logspan.com

Milton Brae Road, Milton,
Dumbarton, Glasgow, G82 2TX

